

13319

MERCEDES BENZ GLK350 4MATIC

8/19/2009

PAGE 1 OF 3

GROSS LOAD CAPACITY WHEN USED AS A WEIGHT CARRYING HITCH: 3,500 LBS. TRAILER WEIGHT & 350 LBS. TONGUE WEIGHT.

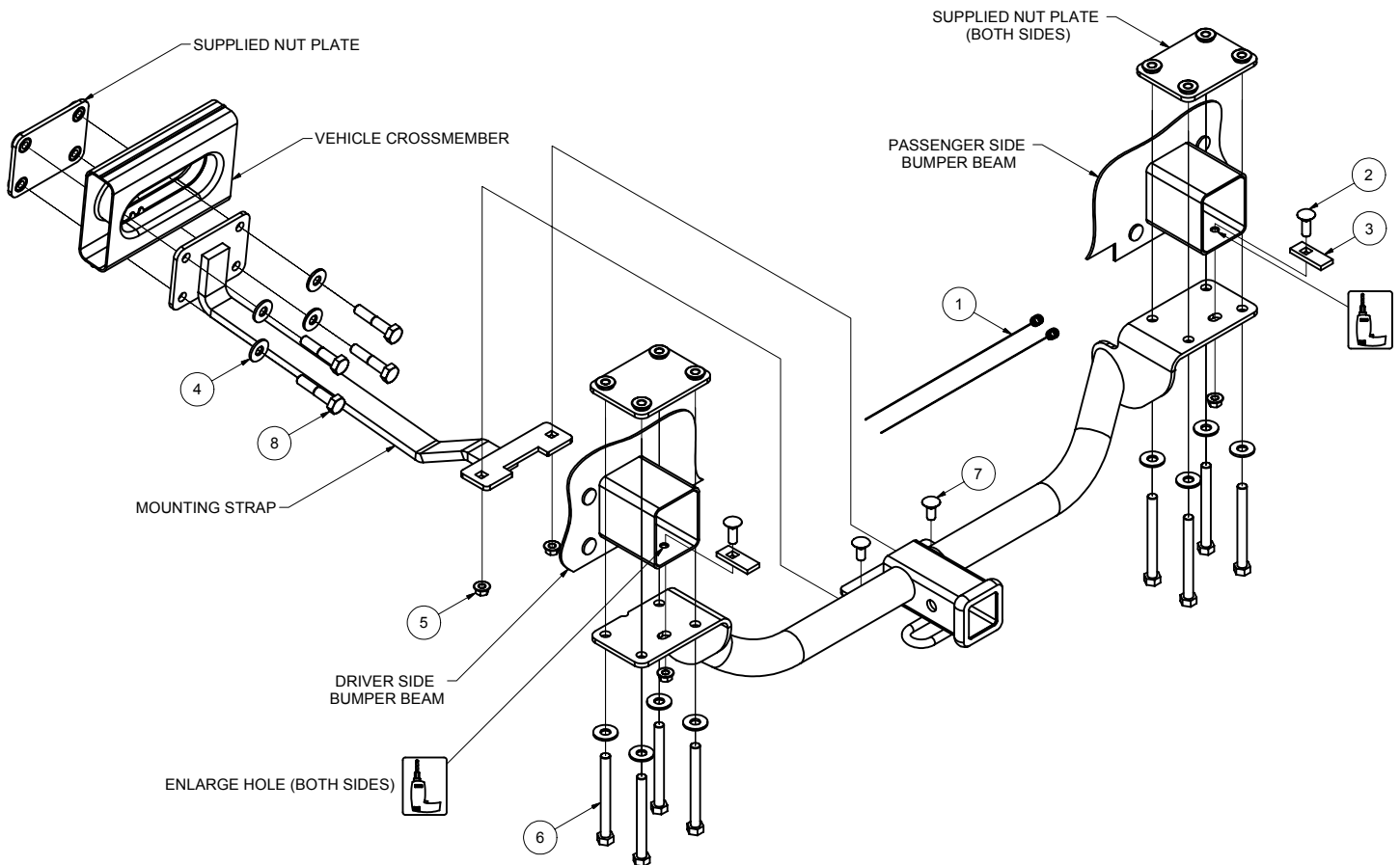
\*\*\*DO NOT EXCEED VEHICLE MANUFACTURER'S RECOMMENDED TOWING CAPACITY.\*\*\*

WARNING: ALL NON-TRAILER LOADS APPLIED TO THIS PRODUCT MUST BE SUPPORTED BY AUXILIARY STABILIZING STRAPS.

\*\* FAILURE TO PROPERLY SUPPORT NON-TRAILER LOADS WILL VOID PRODUCT WARRANTY\*\*

HAVING INSTALLATION QUESTIONS? CALL TECHNICAL SUPPORT AT 1-800-798-0813

Parts List			
ITEM	QTY	PART NUMBER	DESCRIPTION
1	2	7_16 FISHWIRE	7/16" FISHWIRE
2	2	7/16-14 x 1 1/4	CARRIAGE BOLT
3	2	CM-SP2	.250 x .88 x 2.25" SQUARE HOLE SPACER
4	12	1/2"	CONICAL TOOTHED WASHER
5	4	7/16-14	HEX FLANGE NUT
6	8	1_2 - 13 x 5 HEX	HEX BOLT
7	2	7/16-14 x 1	CARRIAGE BOLT
8	4	1/2 - 13 x 2 1/2	HEX BOLT



HITCH WEIGHT: 33 LBS.

INSTALL TIME

PROFESSIONAL: 60 MINUTES

NOVICE (DIY): 120 MINUTES

INSTALL NOTES:

- ENLARGE HOLES
- LOWER EXHAUST
- FISHWIRE HARDWARE

PERIODICALLY CHECK THIS RECEIVER HITCH TO ENSURE THAT ALL FASTENERS ARE TIGHT AND THAT ALL STRUCTURAL COMPONENTS ARE SOUND.

Curt Manufacturing Inc., warrants this product to be free of defects in material and/or workmanship at the time of retail purchase by the original purchaser. If the product is found to be defective, Curt Manufacturing Inc., may repair or replace the product, at their option, when the product is returned, prepaid, with proof of purchase. Alteration to, misuse of, or improper installation of this product voids the warranty. Curt Manufacturing Inc.'s liability is limited to repair or replacement of products found to be defective, and specifically excludes liability for incidental or consequential loss or damage.

13319

MERCEDES BENZ GLK350 4MATIC

8/19/2009

PAGE 2 OF 3

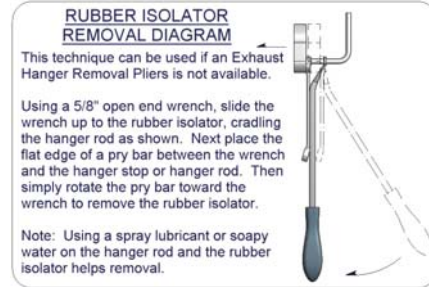
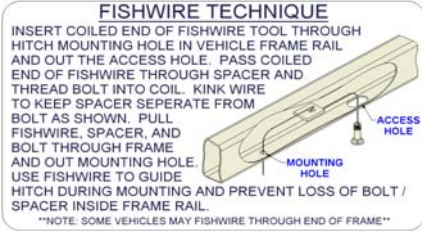
GROSS LOAD CAPACITY WHEN USED AS A WEIGHT CARRYING HITCH: 3,500 LBS. TRAILER WEIGHT & 350 LBS. TONGUE WEIGHT.

\*\*\*DO NOT EXCEED VEHICLE MANUFACTURER'S RECOMMENDED TOWING CAPACITY.\*\*\*

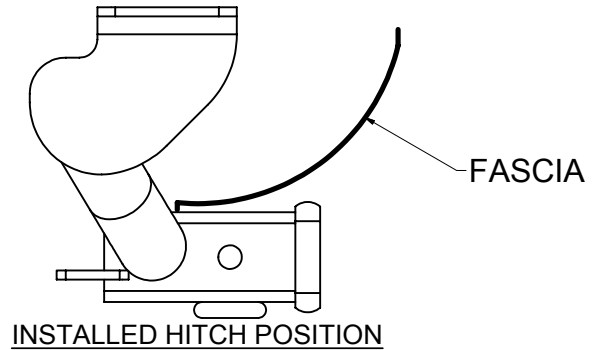
WARNING: ALL NON-TRAILER LOADS APPLIED TO THIS PRODUCT MUST BE SUPPORTED BY AUXILIARY STABILIZING STRAPS.

\*\* FAILURE TO PROPERLY SUPPORT NON-TRAILER LOADS WILL VOID PRODUCT WARRANTY\*\*

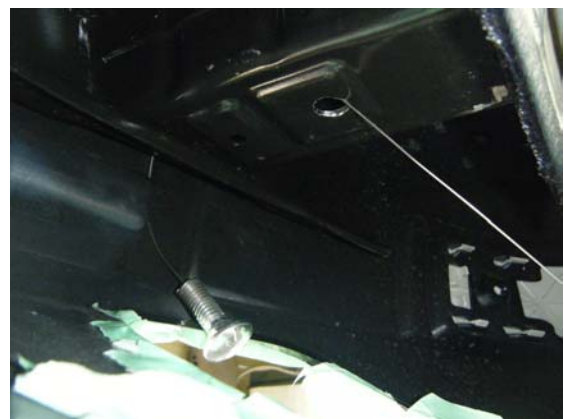
HAVING INSTALLATION QUESTIONS? CALL TECHNICAL SUPPORT AT 1-800-798-0813



TOOLS REQUIRED
DRILL
1/2" DRILL BIT
DIE GRINDER
SOCKET WRENCH
10mm SOCKET
11/16" SOCKET
3/4" SOCKET
4" SOCKET EXTENSION
TORQUE WRENCH



PASSENGER SIDE FISHWIRE LOCATION



DRIVER SIDE FISHWIRE LOCATION

**PERIODICALLY CHECK THIS RECEIVER HITCH TO ENSURE THAT ALL FASTENERS ARE TIGHT AND THAT ALL STRUCTURAL COMPONENTS ARE SOUND.**

Curt Manufacturing Inc., warrants this product to be free of defects in material and/or workmanship at the time of retail purchase by the original purchaser. If the product is found to be defective, Curt Manufacturing Inc., may repair or replace the product, at their option, when the product is returned, prepaid, with proof of purchase. Alteration to, misuse of, or improper installation of this product voids the warranty. Curt Manufacturing Inc.'s liability is limited to repair or replacement of products found to be defective, and specifically excludes liability for incidental or consequential loss or damage.

GROSS LOAD CAPACITY WHEN USED AS A WEIGHT CARRYING HITCH: 3,500 LBS. TRAILER WEIGHT & 350 LBS. TONGUE WEIGHT.

**\*\*\*DO NOT EXCEED VEHICLE MANUFACTURER'S RECOMMENDED TOWING CAPACITY.\*\*\***

**WARNING: ALL NON-TRAILER LOADS APPLIED TO THIS PRODUCT MUST BE SUPPORTED BY AUXILIARY STABILIZING STRAPS.**

**\*\* FAILURE TO PROPERLY SUPPORT NON-TRAILER LOADS WILL VOID PRODUCT WARRANTY\*\***

**HAVING INSTALLATION QUESTIONS? CALL TECHNICAL SUPPORT AT 1-800-798-0813**

## **INSTALLATION STEPS**

1. Lower exhaust by removing two (2) isolators on the driver side muffler, two (2) isolators on the passenger side muffler, and two (2) isolators forward of the mufflers. ( See RUBBER ISOLATOR REMOVAL DIAGRAM.)
2. Tie up exhaust with wire high enough to avoid damaging the exhaust tubes.
3. Remove two (2) screws securing rear fascia to underbody panel. Save screws for reinstallation in Step 20.
4. Enlarge existing slot in bottom of driver and passenger side bumper beams large enough to allow the threaded portion of a 7/16" carriage bolt to pass through.
5. Locate channel behind driver side bumper fascia leading to access hole in driver side bumper beam. (See Page 2 for diagram showing location of channel.)
6. Fishwire 7/16" x 1 1/4" carriage bolt and CM-SP2 spacer through access hole located in Step 5 and out enlarged hole in driver side bumper beam. (See FISHWIRE TECHNIQUE diagram.)
7. Locate square access cover on outside of bumper fascia on passenger side of vehicle. Push in on side of cover with arrow. Open access cover and allow cover to hang. (See Page 2 for diagram showing location of access cover.)
8. Fishwire 7/16" x 1 1/4" carriage bolt and CM-SP2 spacer through fascia access hole located in Step 7 and out enlarged hole in passenger side bumper beam. (See FISHWIRE TECHNIQUE diagram.)
9. Replace access cover from Step 7 by inserting arrow side of cover first and then pushing driver side of cover in until it snaps back into position.
10. Place supplied nut plates over bumper beam, as shown.
11. Raise hitch into position over exhaust.
12. Secure hitch with finger tightened 7/16" hex flange nuts, as shown. (Note: Be sure to slide hitch as far forward as possible.)
13. Secure hitch to nut plates from Step 10, with finger tightened 1/2" x 5" hex bolts and 1/2" conical toothed washers, as shown.
14. Insert 7/16" x 1" carriage bolts through top of square holes behind receiver tube of hitch, as shown.
15. Raise mounting strap between vehicle crossmember, as shown.
16. Secure mounting strap to hitch with finger tightened 7/16" hex flange nuts, as shown.
17. Raise nut plate in front of vehicle crossmember.
18. Secure nut plate to mounting strap with finger tightened 1/2" x 2 1/2" hex bolts and 1/2" conical toothed washers, as shown.
19. Torque all 1/2" hardware to 75 lb-ft and all 7/16" hardware to 50 lb-ft.
20. Reinstall (2) two screws removed in Step 3.
21. Raise exhaust back into position.
22. Remove wire from Step 2.

**PERIODICALLY CHECK THIS RECEIVER HITCH TO ENSURE THAT ALL FASTENERS ARE TIGHT AND THAT ALL STRUCTURAL COMPONENTS ARE SOUND.**